

Meet Yoto Player



Kit Contents

- Yoto Player
- Charging cable
- Instructions
- Case
- Audio Cards
 - 27 for Preschool-Age kit
 - 28 for School-Age kit
- Card Wallet

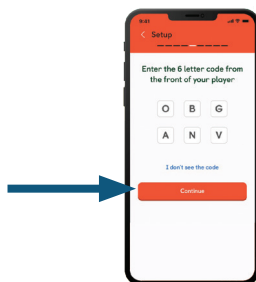
If you notice pieces are missing, please speak with a staff member at the Help Desk.

Yoto Player Setup Instructions

1. Download the Yoto app
 - Install the Yoto app to your mobile to set up your player.
 - Create your personal account.
2. Turn on and charge your player
 - Plug in the USB-C cable and connect to power.
 - Press and hold the **On/Off button** (right side) for 3 seconds until it lights up. If the battery is low, charge first.
3. Authenticate your player
 - In the app, select **Set up a Player**



- Remove any card, then hold both orange buttons for 5 seconds to see a 6-letter code.
- Enter the code in the app and tap **Continue**



4. Connect to Wi-Fi
 - Tap **Join** when prompted to connect to the Yoto hotspot.
 - The code will turn green when it is connected.
 - Select your Wi-Fi, enter the password, and tap **Done**
 - A green Wi-Fi icon confirms success.
5. Finalizing setup
 - The player updates automatically—let it finish.
 - Tap **Pair My Phone** in the app.
 - The player will restart and show the clock.

Scan the QR code for more information on how to set up Yoto Player



support.yotoplay.com/en-US/setting-up-your-yoto-player--mini-3098



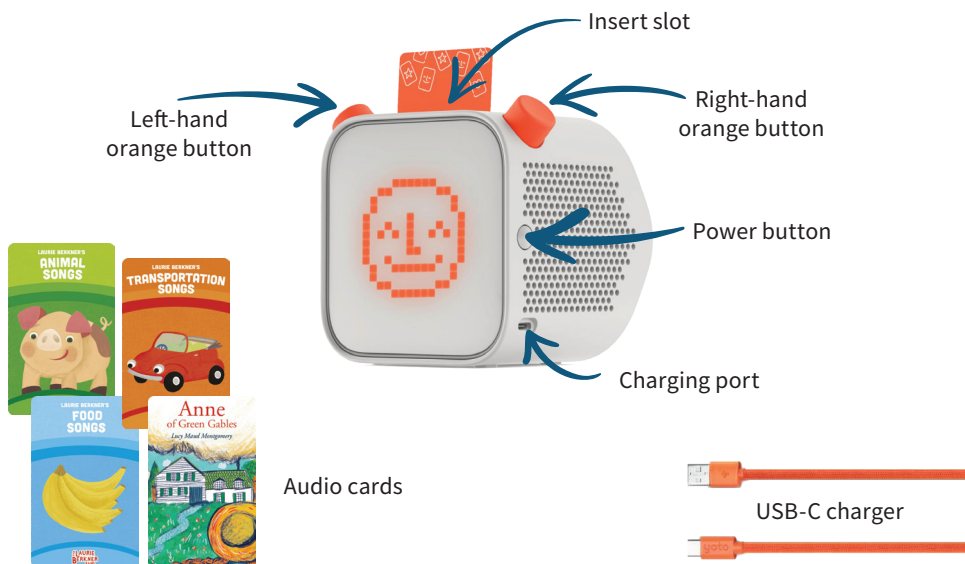
coqlibrary.ca/borrow-and-stream/lendable-tech

How to Start Playing Cards (for the First Time)

- Set up the Yoto player and connect it to Wi-Fi.
- Insert all cards one by one to start downloads.
- Leave the player on, charging, and online overnight for smooth playback.
- Poor Wi-Fi or multiple downloads can cause audio stuttering.
- Downloads only happen when the player is idle with no card inserted.

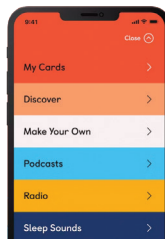
How to Use Yoto Player

- **Insert Audio Card:** Push a card into the slot to play content.
- **Control Volume:** Use the left-hand orange button to adjust the sound.
- **Next/Previous Track:** Rotate the right-hand orange button to move between tracks.
- **Nightlight and Clock Features:** Optional features that can be controlled with the app on a parent's mobile.
- **Charging:** Use a charging cable.



What Can You Do with the Yoto App?

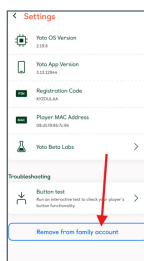
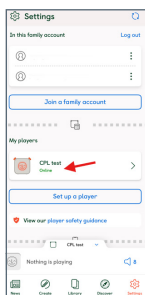
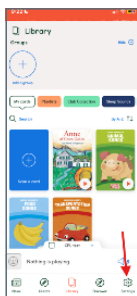
- **Set up and control the Yoto Player:** Set up, control remotely, and link content to cards.
- **Access audio:** Listen to stories, music, podcasts, and radio.
- **Personalize the night-light:** Set limits and control the player.
- **Play in-app audio:** Stream on your phone, Bluetooth speakers, or Yoto Player.
- **Remotely control playback:** Manage what's playing from the app.
- **Set a sleep timer:** Tap the moon and stars icon to set a timer.
- **Limit volume:** Set volume restrictions.



How to Unpair the Yoto Player

Please unpair the Yoto Player before returning it to the Library.

- Open the Yoto app and tap **Settings**
- Select the Yoto Player to unpair
- Scroll down and tap **Remove From Family Account**



Scan the QR code for more information on how to use the Yoto Player app



support.yotoplay.com/en-US/articles/using-the-yoto-app-2296



coqlibrary.ca/borrow-and-stream/lendable-tech



**COQUITLAM
PUBLIC
LIBRARY**

coqlibrary.ca | 604-554-7323