

Getting Started with Sphero

at Coquitlam Public Library



Getting Started with Sphero

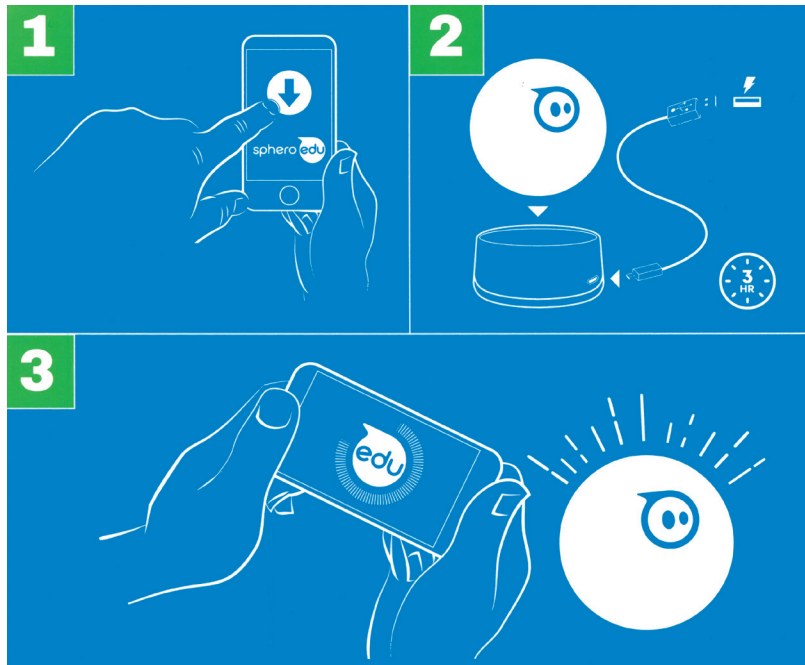
at Coquitlam Public Library



What can your Sphero do?

The Sphero can move, change colours, make noises, and follow programmable instructions.

1. Download the Sphero Edu app.
2. Make sure Sphero is charged. When plugged in, if the base blinks blue, Sphero is charging. When the blue light becomes solid, Sphero is fully charged and ready to use.
3. Open the Sphero Edu app and turn on your device's Bluetooth. From the Home screen, tap on 'Connect Robot'. Explore the app to create a program, complete an activity, or drive your Sphero.



See <https://edu.sphero.com/cwists/category> to:

- discover other games, lessons, and activities by topic and by grade
- choose from Sphero-created activities or community-created activities

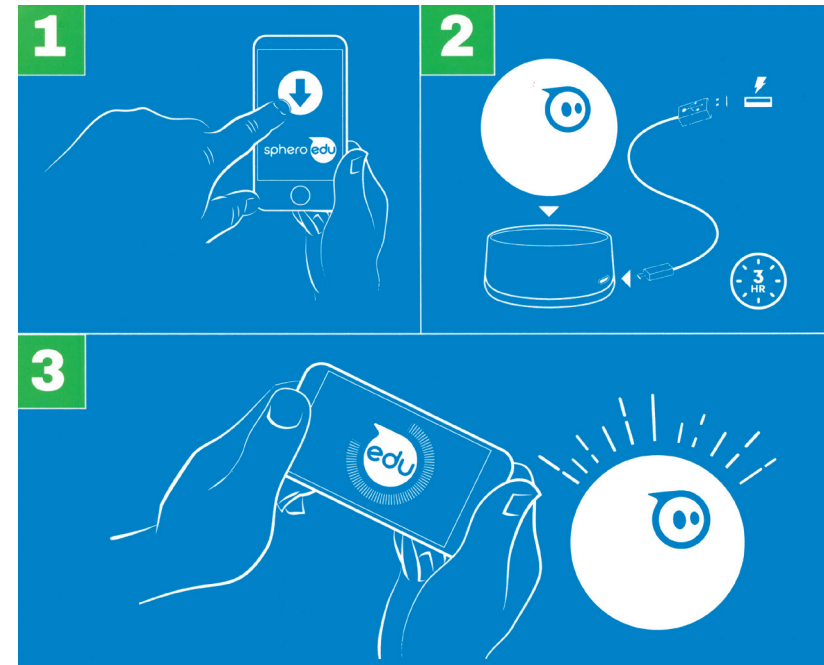
City Centre Branch & Library Link
1169 Pinetree Way • 604-554-7323
Poirier Branch
575 Poirier Street • 604-554-7323

COQUITLAM
public library
coqlibrary.ca
March 2021 / jq/pub

What can your Sphero do?

The Sphero can move, change colours, make noises, and follow programmable instructions.

1. Download the Sphero Edu app.
2. Make sure Sphero is charged. When plugged in, if the base blinks blue, Sphero is charging. When the blue light becomes solid, Sphero is fully charged and ready to use.
3. Open the Sphero Edu app and turn on your device's Bluetooth. From the Home screen, tap on 'Connect Robot'. Explore the app to create a program, complete an activity, or drive your Sphero.



See <https://edu.sphero.com/cwists/category> to:

- discover other games, lessons, and activities by topic and by grade
- choose from Sphero-created activities or community-created activities

City Centre Branch & Library Link
1169 Pinetree Way • 604-554-7323
Poirier Branch
575 Poirier Street • 604-937-4141

COQUITLAM
public library
coqlibrary.ca
March 2021 / jq/pub